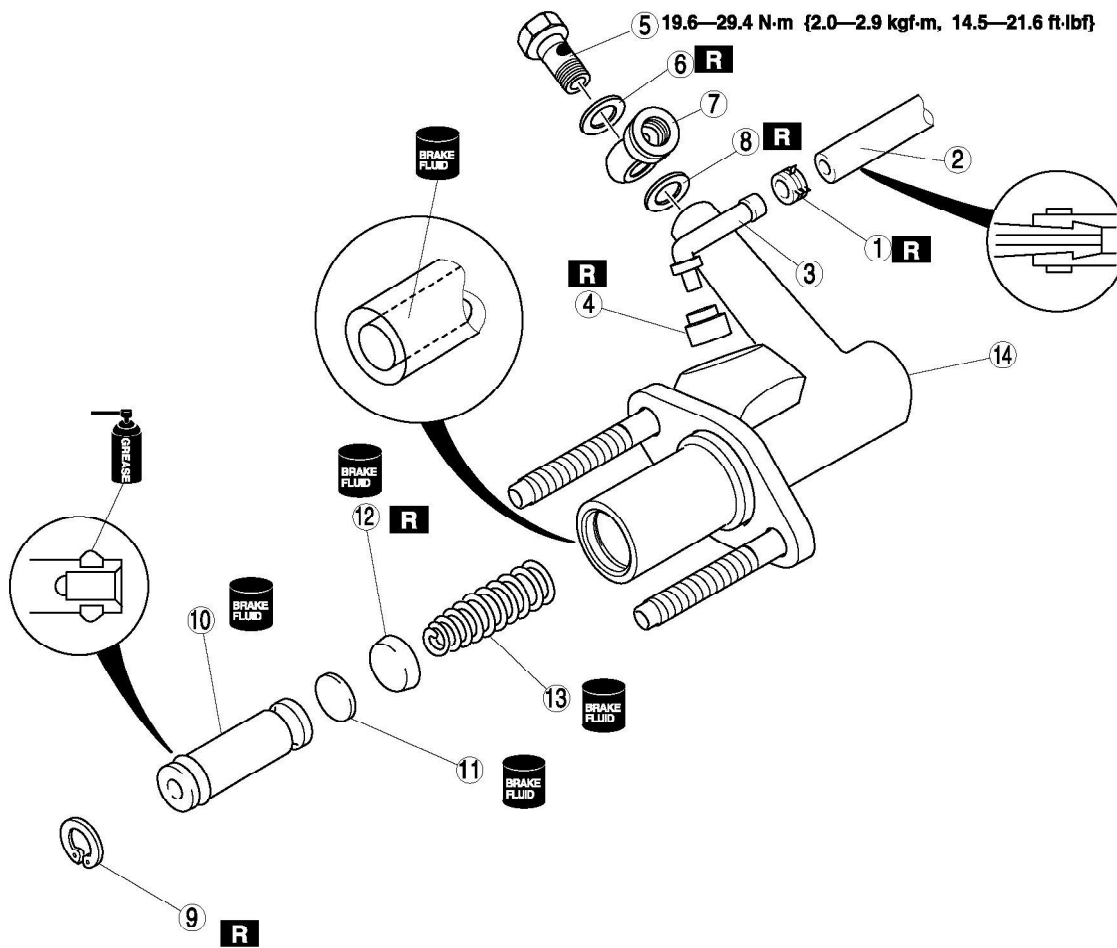


CLUTCH MASTER CYLINDER DISASSEMBLY/ASSEMBLY

1. Disassemble in the order indicated in the table.
2. Assemble in the reverse order of disassembly.



1	Hose clip
2	Reserve tank hose
3	Joint
4	Bushing
5	Bolt
6	Packing
7	Connector
8	Packing
9	Snap ring
10	Piston, secondary cup component
11	Spacer
12	Primary cup
13	Return spring